

Electric strike EPR-201-XXMVAR-X01-DOORS



Series **200 ADVANCE** has been made with the latest technology. It allows an easy installation for all kind of door profiles thanks to its reduced size and it is opening voltage of 10-24 V. It is symmetrically constructed, so it is universal for left and right handed doors. Its Radial jaw feature incorporates a latche that spins on a displaced axis towards the bottom of the electric release allowing to reduce its movement area. The instalation is easier, more aesthetic and allows a smaller cutout in the frame of the door. The version with the built-in microswitch is special suitable for access control systems.

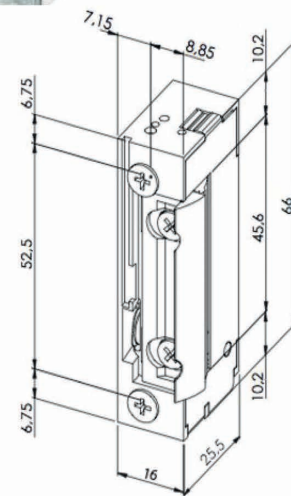


The smallest strike
various spring jaw hardness

Electrical characteristics:

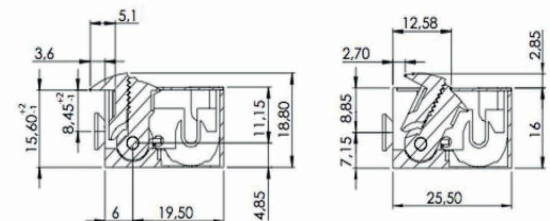
	X01	X03
Voltage range - momentary:	10-24V AC/DC	11-12VDC
Voltage range - continuously:	11-13V DC	11-12VDC
Allowed powering time:	Moment./Contin.	Contin.
Coil resistance (ohm):	43	51
VAC power consumption (mA):	250 (12V)	-
VAC power consumption (mA):	500 (24V)	-
Consumption stabilized VDC (stabilized):	280 (12V)	235 (12V)
Consumption stabilized VDC (stabilized):	560 (24V)	-
Max, preload latch to open (DC) in N:	120 (12V)	-

Spring hardness: see the table below

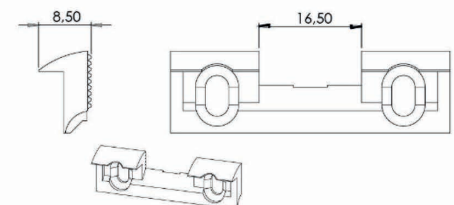


Technical characteristics:

High: max. 66,00 mm
 Width: max. 16,00 mm
 Depth: max. 25,50 mm
 VARIO Micro-adjusting: +2-1 mm
 Holding force: 3.230 N
 Operating temperature range: -15°C do +40°C
 Cycles tested on power electricity: 400.000



U2 jaw



Article	Fail secure	Fail safe	Delay action	Delay action automat. adjustable	Delay action - invisible	Latching spring hardness	U2 jaw	Unlatching mechanism	Micro-switch	VARIO Micro-Adjustable jaw
EPR-201-XXMVAR-X01-DOORS	x					extra hard	x	x		x stand.